

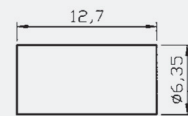
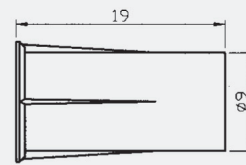
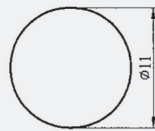
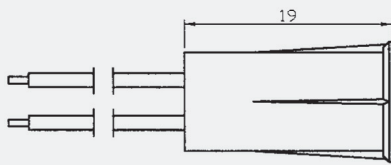
## Specification: **BR-1012**

- \* 3/8" diameter miniature flush mounted
- \* Press to fit
- \* Standard 18" #22AWG Leads
- \* Special leads upon request
- \* Switch or magnet are available separately
- \* Resistor, Diode and Supervisory Loop available on request
- \* Colors: White, Brown, Grey

### ... Recessed Mounted

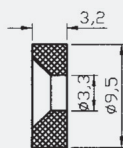


## Dimension (mm):

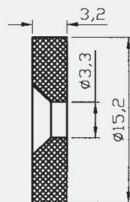


**MN2550**  
for BR-1012MN2550

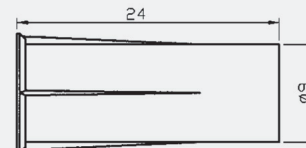
### Alternate Rare Earth Magnets:



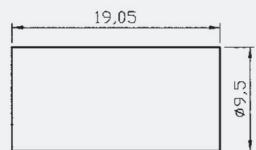
**MN400**  
for BR-1012DM



**MN600**  
for BR-1012DMWG



**M3710C**  
for BR-1012WGL



**MN3775**  
for BR-1012XWG

## Order Information:

Part Number	Loop Type	Reed Form	Closed Gap [Inch(mm)]	Departure Gap [Inch(mm)]	Maximum Initial Contact Resistance (Ohm)	Maximum Contact Rating (W)	Maximum Switching Voltage (VDC/VAC)	Maximum Switching Current (A)
BR-1012	Closed	N/O	3/4 (19)	0.8 (20)	0.150	10	100	0.5
BR-1012WG	Closed	N/O	1 <sup>1</sup> / <sub>4</sub> (32)	1.45 (37)	0.150	10	100	0.5
BR-1012WGL	Closed	N/O	1 <sup>1</sup> / <sub>8</sub> (28)	1.1 (28)	0.150	10	100	0.5
BR-1012MN2550	Closed	N/O	3/4 (20)	0.9 (23)	0.150	10	100	0.5
BR-1012DM	Closed	N/O	5/8 (16)	0.75 (19)	0.150	10	100	0.5
BR-1012DMWG	Closed	N/O	1 (25)	1.05 (27)	0.150	10	100	0.5