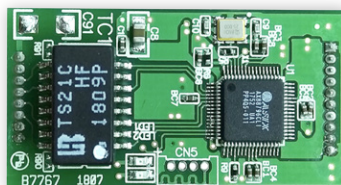


# AR-331-MO

TCP/IP module for 331E/EF

**SOYAL**



Parameter	Description
Control Interface	SPI
Power Supply	3.3VDC
Power Consumption	0.5W
Operating Temperature	-20°C to +65°C
Protocol	IEEE 802.3x
Dimension(mm)	38.5 (L) X 20 (W) X 7 (H)
Weight(g)	20g±10