

SOYAL[®]

Vision Series

AR-837-E/EE

LCD Access Controller

Flush mount IP-Based Access Controller; Customized panel design enhance overall image of building quality; built-in capacitor door bell for visitor, no need external door bell



LCD (128*64) Menu Setting

Intuitive menu help users to do functional settings according to LCD display, no need to memorize command set.

Physical backlit buttons and customizable panel design

The rubber solid key design is easy to operate, customized panel for company identification.

Four function keys for Time Attendance

Duty ON/OFF, Break Out, Break Return, Overtime ON/FF

Surface mount and Wall mount installation

Flexible to select the way to install according to decoration surface.

Capacitor Door Bell Button

It has built-in independent capacitor doorbell button and doorbell output, which can be used with other bells for visitors (an external relay module is required).

Features



Double Relay



Door Bell



Complete Indicator



Quality in Color



Two Doors Control



Suitable for
Extended Function



Web



Youtube

- RS-485 and TCP/IP communication interface
- Built-in Watch Dog to prevent the halting
- User capacity: 16,000; Event logs: 32,000
- Lift Contro: 64 floors/32 floors/16 floors
- Ingress Protection IP65
- Data redundancy while system disconnected, identify users and store event log up to 32000 records
- Access Mode: Card Only, Card or PWD, Card and PWD
- 63 auto-open zone settings and 16 sets of Auto-Open Zone editable
- WG port provides anti-pass-back function
- Built-in HTTP Browser for remote Access Control
- One more Exit Switch, Door Contact and Door Output to wiegand
- Built-in Multi-Output: Door Lock / Alarm / Arming / Duress / Security trigger signal
- 125kHz and 13.56MHz can be used simultaneously two channels
- TTL or RS-485 serial output for various application, lift control and Bluetooth Module
- Built-in 16 set of Alarm and 120 days of Holiday setting
- Including the input of door contact, offering the alarm system of both door opening too long and being forced to open
- Intelligent to shift for standalone or networking mode while system disconnected
- Support SCC encryption (SOYAL SECURITY COMMUNICATION) to enhance security of communication

SPECIFICATION

Communication interface	Host	RS485(9600 bps (N, 8, 1) / TCP/ POE
	Serial	UART PORT (Output only) / 9600 bps (N, 8, 1) X2
Frequency	125kHz / 13.56Mhz / Dual Band	
Supported Tags	125kHz	ISO18000-2: EM4001 and EM4095 compatible
	13.56MHz	ISO14443 Mifare Ultralight / Classic / Plus / DESFire / - EV1/ EV2 / NFC (card simulation)/ISO15693 / Felica
Crypto	13.56MHz: CC Certification: AES Crypto comply with EAL5+	
RFID Reading Range	125kHz: 5-15 cm / 13.56MHz: 2-5 cm	
UID Bits	64	
DI/DO	DI	Egress X2 / Door State X2 / Door Bell
	DO	Door Bell Output /Security Output / Arming Output / Duress Output
	RO	Door Lock Relay / Alarm Relay
Doors/Floors Number	2 Doors / 64 Floors	
User Capacity	16,000	
Event Log	32,000	
Indicator	LED	6 Bi-Color LED Power / Alarm / Arming / OK / Error / In processing
	Buzzer	1
Extend Port	Tamper Switch / Tamper Output / WG In Port / WG Out Port	
Dimension (mm)	AR-837-E :128(H)X94(W)X40(25(D)) AR-837-EE :128(H)X147(W)X40(25(D))	
Housing Material	ABS	
Color	Black Edge / Silver Edge	
Weight (g)	AR-837-E:220±10 / AR-837-EE:450±10	
Power Consumption	<5W	
Power Voltage	9-24VDC	
Ingress Protection	IP65	
LCD Panel	128*64 (4 line messages, 16 Characters each line)	
Enviroment	Operating Temperature	-20°C ~ +65°C
	Storage Temperature	-25°C to +70°C
	Operating Humidity	20%~90%
	Storage Humidity	5%~95%

WHAT WE OFFER

✓ Reader Mode Supported

AR-837-E/EE controller can also be set to Reader mode, with Wiegand output that can be integrated with various brands of controllers, with a dual-band format that turns into Wiegand dual-band Reader.

✓ Real-time event log integration

After reading card, IP-based controller AR-837-E/EE will actively send the event logs through port 8031 for the integration with the 3rd party program.

✓ Auto-Schedule

AR-837-E/EE special firmware connect with DO module AR-401RO16B, using Lift Control program enabling you to control each Digital Output and formulate a time schedule for each output, up to 64. It's suitable for each various switching devices, such as lighting, sprinkler system, air conditioning, etc.

✓ Auto-Open

The Wiegand reader Auto-Open time zone setting to control the infrared activation function / output the second set of door contact functions at a specific time.

✓ Auto-Alarm

Built-in 16 sets of Alarm to output flash light, alarm clock, broadcast system, and each set of Alarm can set the output time.

✓ With 2 sets of UART port

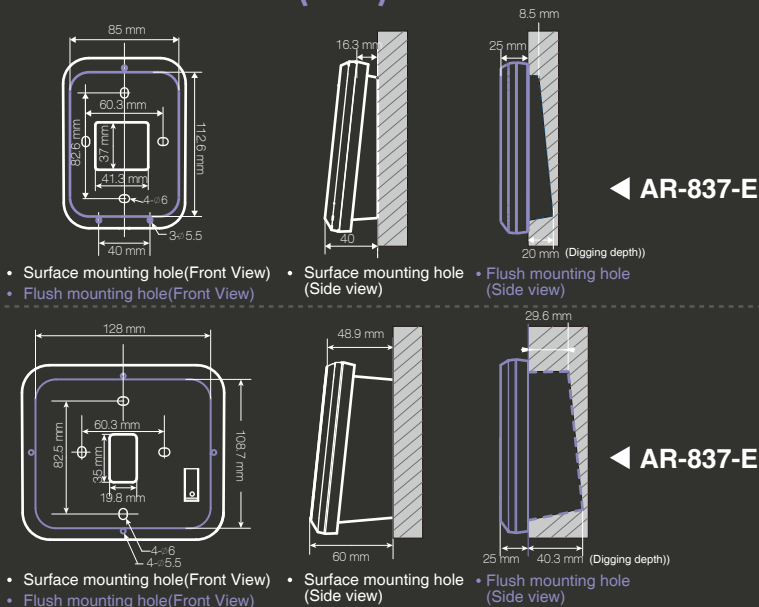
It can be applied to:

- (1) 256-point Mailbox Management System
- (2) Auto-scheduling control function-64-point DO control
- (3) Printer integration
- (4) Voice module (AR-721V-V2)

✓ Double Door Control

Connected with Reader, it can manage 2 access control by a single unit AR-327-E. The second set of access control also has the exit switch, door contact status and door output control, can also set different access level (such as - can access Door A but can not access Door B).

INSTALLATION(mm)



HOW TO ORDER

AR-837-EXR1X11-X

Frequency
B=125kHz
D=13.56MHz
S=125kHz+13.56MHz

RTC
R=Built-in RTC

Communication
1=RS485

Waterproof
1=Weatherproof

Additional Module
A=TCP/IP Module
P=POE Features

Language(LCD)
1=English/Chinese

Color
B=Black Edge
1=Silver Edge

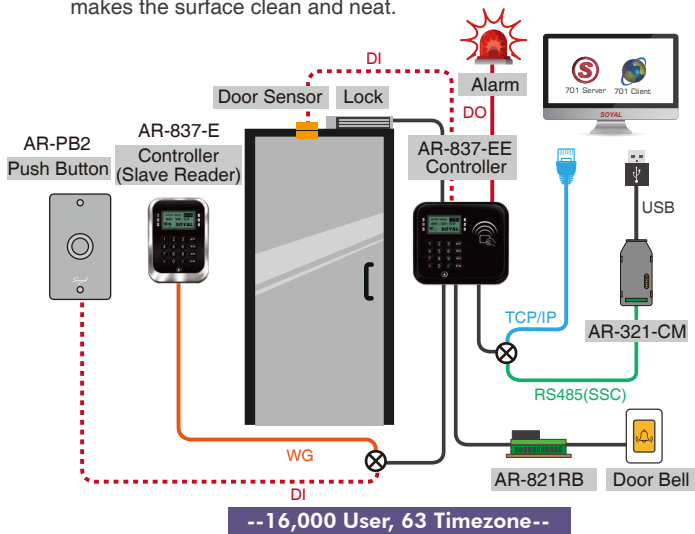
APPLICATION & STRUCTURE DIAGRAM

● STANDALONE & NETWORKING ACCESS CONTROL

Anti Passback: restrict user to re-enter before exiting venue or increase security level by having access reader at the other side of the door. Both entering and exiting will required swipe card or keyfob for access.

AR-837-E/EE can detect abnormal event with the door contact status in arming mode. When a forced entry or door opening too long, an alarm is generated and sent to the software, AR-837-E/EE alarm output can be equipped with a flash buzzer as warning on site.

Visitor can either press the door bell on AR-837-E/EE controller or external bells that being connected to relay module which use the independent output PIN , no need to install other door bells, it makes the surface clean and neat.



● BUILT-IN HTTP WEB SERVER

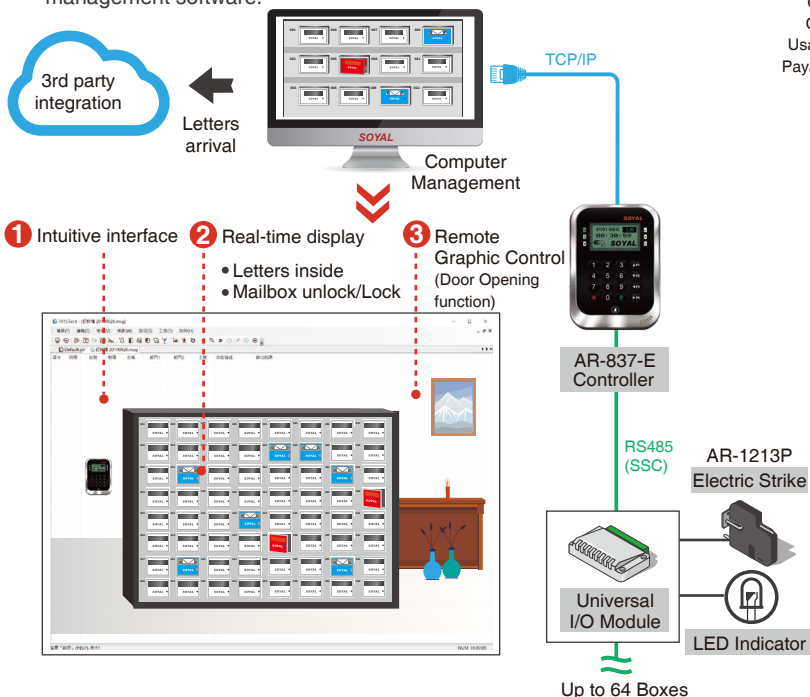
IP-Based Controller has built-in HTTP WEB Server for Access Control, just input IP address, have it logged in to remotely control a single controller, enabling adding User card, time zone setting, review event logs, etc, even more can remotely open/close door regardless the brand of computer and smart phone. As long as there is a WEB browser, the remote management function can be achieved.



● Smart Mailbox Integration Application

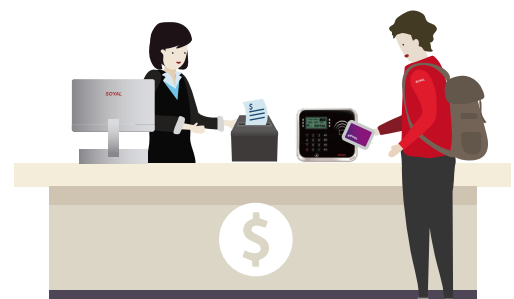
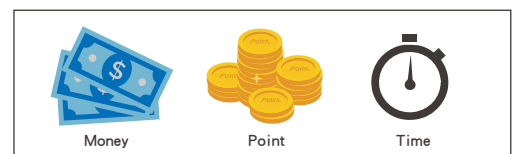
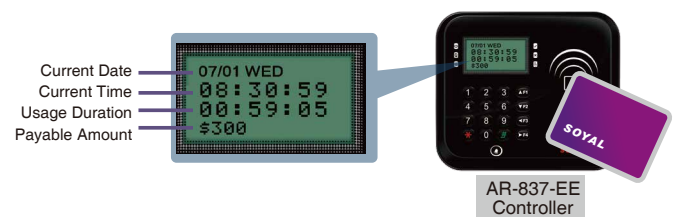
When letter arrives in mailbox, LED light will be flashing to remind user and send a real-time message to software 701Client Pop Graphic; when user swipes card to open mailbox and take out letter, then close the mailbox, LED light will be off and the message will be eliminated in 701Client Pop Graphic.

It can also detect whether the mailbox is not closed and activate alarm when open too long. In addition, no matter what is the status (letter inside or open too long), the controller always provides real-time information for third-party integration such as property management software.



● Offline Cashless Payment & Store Value Application

With SOYAL SOR MifareKey Encryption to manage offline cashless payment & to store value. According to customer needs to deduct the value by time duration, time frequency, etc. Once swiping card, the LCD monitor will display the deduction and balance, etc.



PERIPHERALS / ACCESSORIES

HIGH LEVEL SECURITY

• Anti-Cloning Kits



Mifare Encryption

Encoder: AR-725-P
Authorization Tags
Software: Mifare Key



Desfire Encryption

Encoder: AR-837-P
Authorization Tags
Software: 323D Master

• Expansion I/O Control



I/O Modules

AR-401 Series:
Multiple Channel I/O Module
AR-403 Series: Tiny Digital I/O Module



AR-837-E AR-837-EE

NETWORKING

• Software



File Based & Data Based Interchangeable Software for Access Control, Time Attendance, Status Monitoring and Configuration

701 Server & 701 Client



Firmware Upgrade

UdpUpdater



Remote Lift Control and Time Table Setting

LiftControl

• Signal/Interface Converter



POE Module

AR-MDL-RJ45-POE-12V12W



Isolated USB to RS-485

AR-321-CM

Isolated RS232 to RS-485 Converter

AR-321-CM-485232



Ethernet to RS485

AR-727-CM
AR-727-CM-IO-0804M (with I/O for Fire Alarm to open all doors)

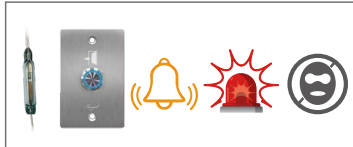
STANDALONE

• Input/Output



Locks

Magnetic Lock
AR-0600M-270
Electric Bolt Lock
AR-1207 Series
Cabinet Lock
AR-1211-P/AR-1213-P
Electric Strike
AR-YS-130NO/AR-YS-131NO



Door Sensor / Push Button / Door Bell / Alarm / Burglary Security System

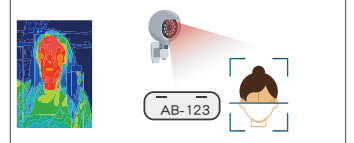
• Multi-Door AntiPassback



Multi-Door Control Series

AR-716-E16: 16 Doors IP Control Panel
AR-716-E18: 18 Doors IP Control Panel

• Extensive Applications (UDP/TCP)



Infrared Thermo-Camera, LPR (License Plate Recognition)

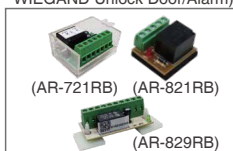
• Illuminate Series



AR-725-K

Proximity Reader
AR-725-U

• External Relay Output (Security / Arming / Duress / WIEGAND Unlock Door/Alarm)



1 Form C relay with time delay

AR-721RB

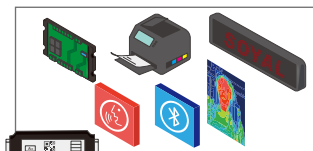
1 Form C relay

AR-821RB

2 Form C relay

AR-829RB

• UART Port x 2



Lift Control / I/O Module / Printer / LED display / Voice Module / Bluetooth Module / Infrared Thermo-Camera

• Programming • Necessary



Keyless Editing

Self programmed master card



Power Supply

BP-W12-1500 (1.5A)
BP-W15-2400 (2.4A)



Proximity Tags

125kHz: EM
13.56MHz: Mifare Classic, Mifare Plus, Mifare Desfire, UltraLight
Tags Selection: Thin Card, Round Keyfob, Square Keyfob

FAQ

Q: How to replace LCD display pictures in standby mode for SOYAL E-series controller?

A: E series LCD controllers can replace the pictures displayed in standby mode through a software tool, and can design the drawing file according to your needs, such as the company logo or building image, etc., which can improve the overall image.



◀ Scan QR cod to view

Q: How to do wiring connection for AR-837-E/EE with external door bell?

A: AR-837-E/EE has built-in door bell function, adding a relay module that can connect with external bells, no need to equip another door bell on decoration surface, it keeps the surface clean and neat, simple and elegant. Please scan below QRCode to view the steps of how to do.



◀ Scan QR cod to view



More FAQ