

8 Input Expander Module

EC-Z8  infinity series
powered by EliteControl

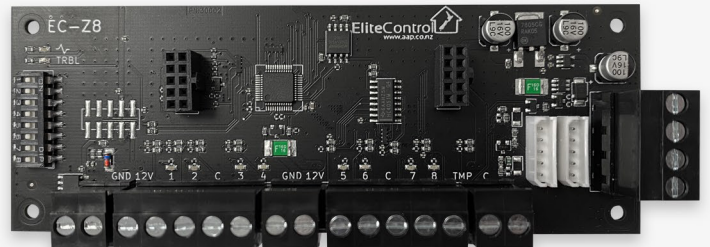


Each EC-Z8 incorporates 8 inputs & a system tamper terminal. 30 x EC-Z8 modules can be connected to one EC control panel to expand the system up to 248 inputs

All inputs are individually configurable to perform the function you require. Functions include, alarm, fire, access control, monitoring & more

Features

- 8 x Configurable inputs
- 2 x Quick connect keypad bus sockets
- Keypad bus screw terminals
- All terminals are large & plug in
- Add up to 30 x EC-Z8 to 1 x EC control panel
- Fits standard EC cabinets & EC-SCC plates
- Dimensions - 140 x 52 x 25mm
- Optional plug in battery back up power supply, 12V 1.4A - EC-PSU2



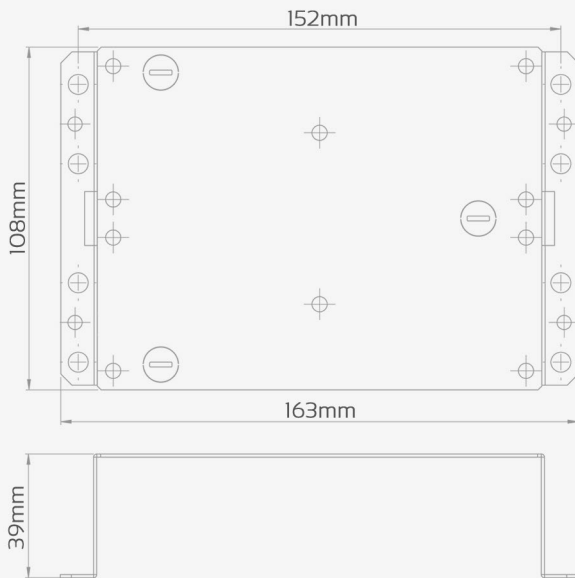
Compatible Products

EC-PCB & EC-i | EC-04 | EC-A2 | EC-PSU2 | EC-LCD | EC-LCD PROX | EC-TOUCH W | EC-TOUCH B
EC-KP W | EC-KP B

Mounting & Cabling

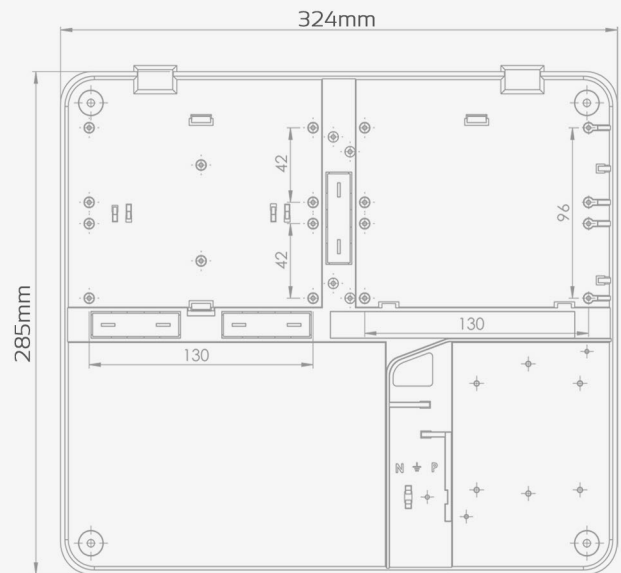
EC-Z8  infinity series
powered by EliteControl

EC-SCC PLATE



- Supports up to two expander modules
- Fits standard structured cabling cabinets

EC-CAB



- Supports one control panel & two expanders or up to four expander modules
- Clip in circuit boards
- Also accommodates one 7A 'SLA' battery & 1.4A or 3A power supply



Each EC control panel & expander is equipped with 2 x quick connect bus sockets. This means bus communication for a complete system can be achieved in seconds, saving time on every installation

Quick Connect Looms

- ARR-14 - 300mm loom
- ARR-15 - 1500mm loom